

September 2013



A 2 Zee Models

HU-16A

ALBATROSS

1/48TH DETAIL UPGRADE SET.

FOR TRUMPETER KIT



Improved front fuselage and canopy section for the Trumpeter HU-16 Albatross

Well this is a set to improve a fantastic kit of a really cool aircraft. However on studying the real aircraft at Santa Rosa airport museum in California recently and after studying hundreds of photographs along with consulting various drawings I just needed to improve the look and feel of the aircraft.

The two main features that have been missed and over emphasised are all around the front section of the fuselage. The distinct 'boat shape of the hull is far too angular and requires a more gentle curve. The second point is that the canopy as supplied fit far too flat and square to the fuselage side and therefore the entire front fuselage sections have been reworked and a new canopy section has been made.

I am sure that all will notice that these corrections will just help to bring the great kit up to a new level and enhance the visual effect off the completed model.



£18



CANOPY MASK INCLUDED.

RESEARCH

HU-16A ALBATROSS

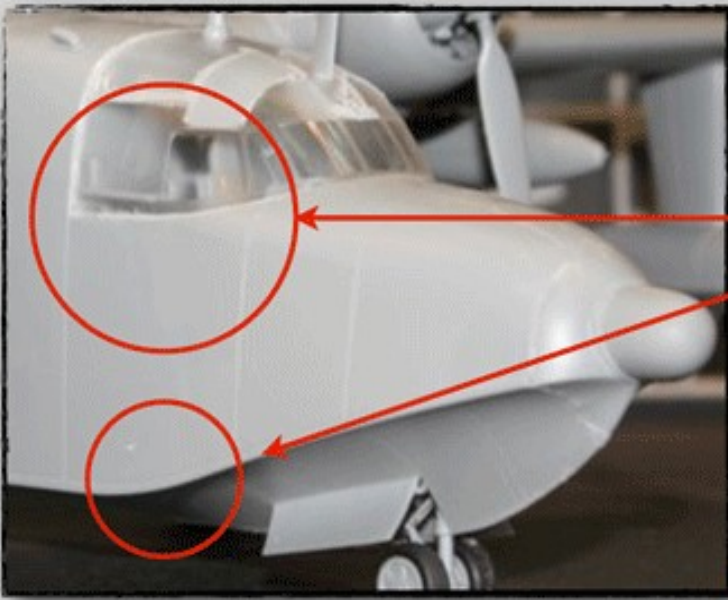


Location; Santa Rosa airport museum, San Francisco, California

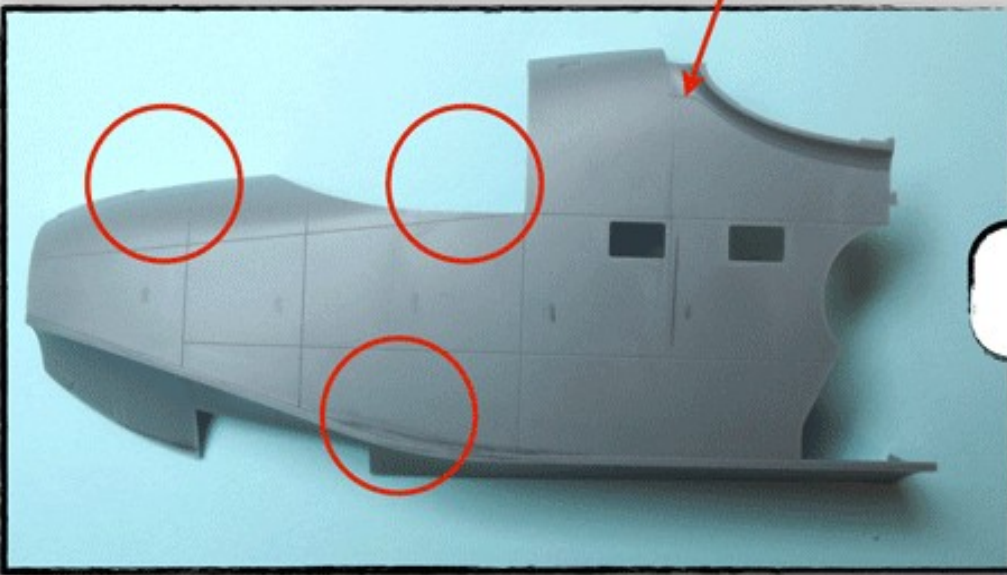
Picture by - Alistair McLean

As you can see there is a defining curve where the canopy meets the fuselage which has been missed out in the trumpeter kit.

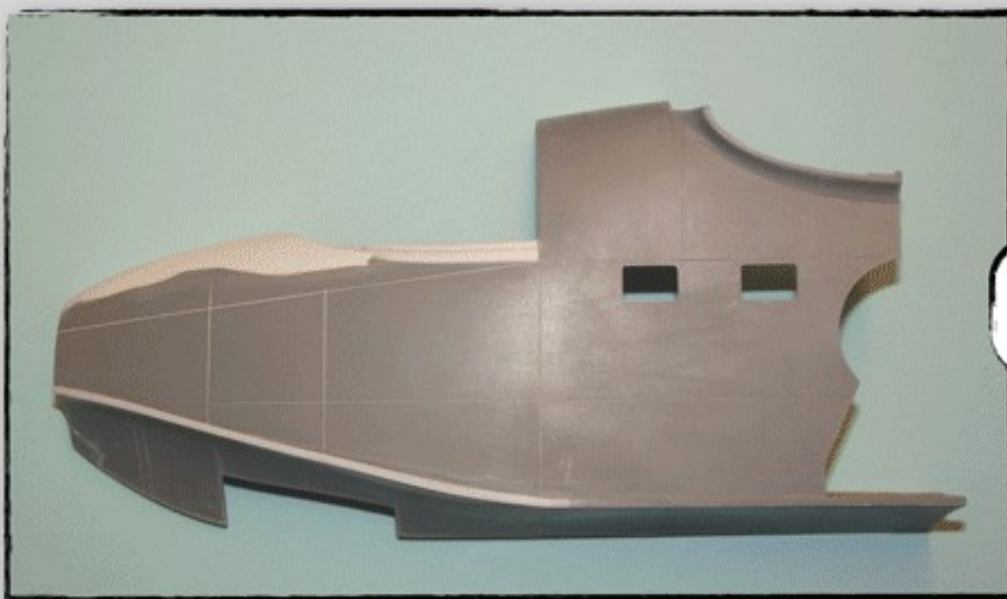




Just showing areas of the front fuselage we have tackled to improve the form and shape of the parts.



Kit Part ...



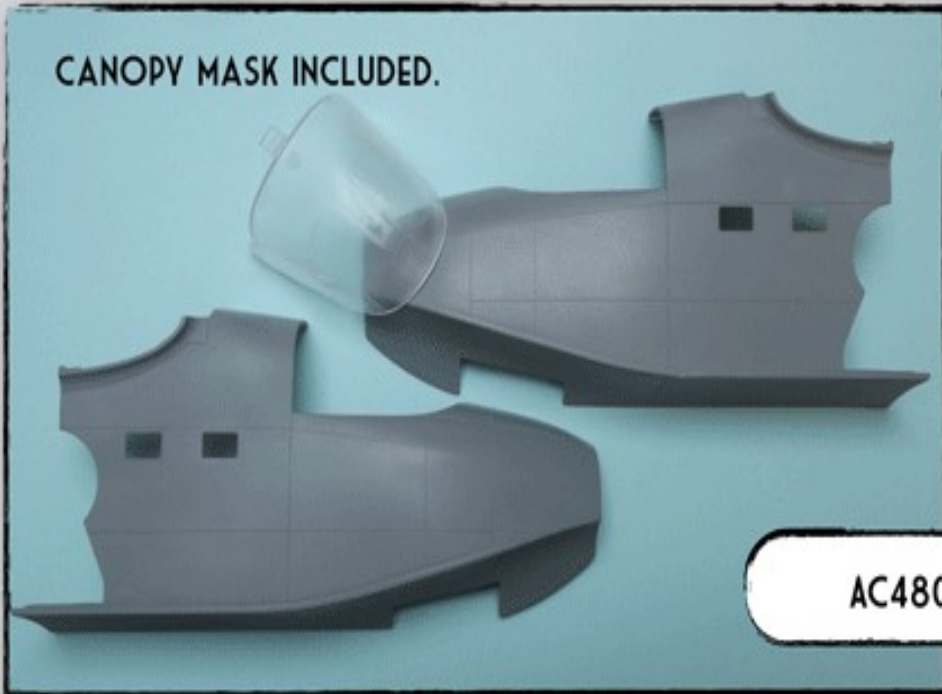
In Progress...



HU-16A ALBATROSS

1/48TH DETAIL UPGRADE SET. FOR TRUMPETER KIT

CANOPY MASK INCLUDED.



£18

AC48032C



FIND A2ZEE MODELS ON FACEBOOK

