

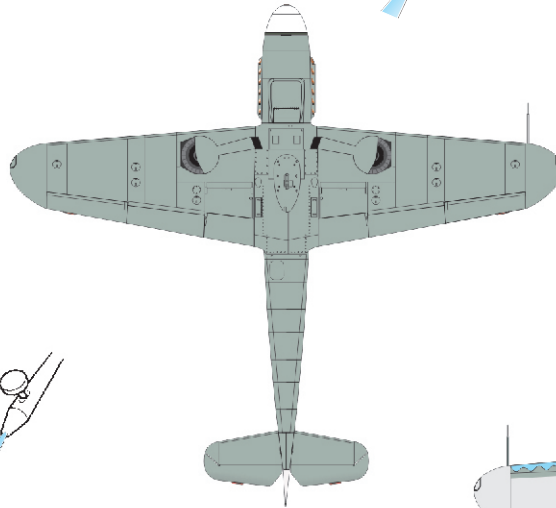
eduard
MASK

EX 510

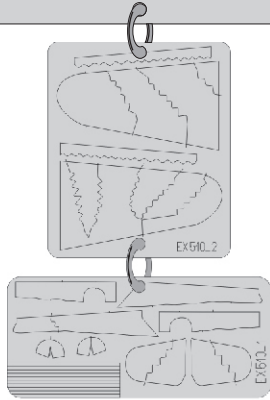
Bf 109G camo scheme - Erla

The die-cut mask for accurate camouflage painting of the
Eduard
scale 1/48 KIT

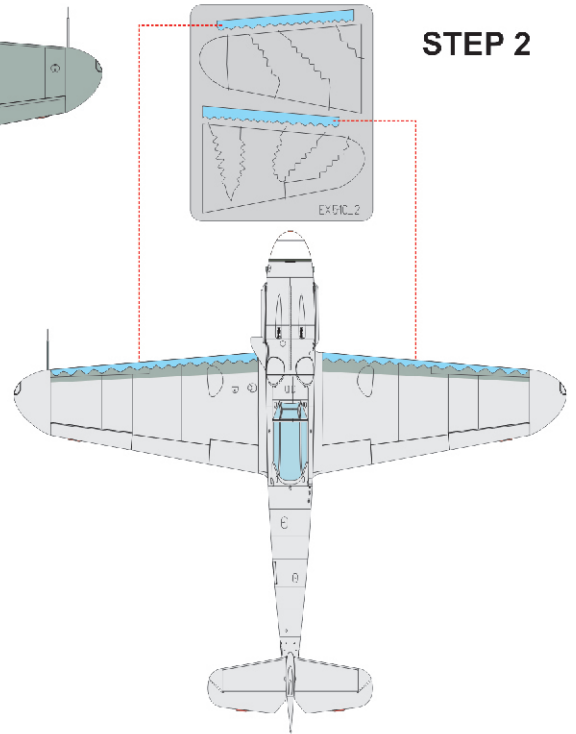
STEP 1



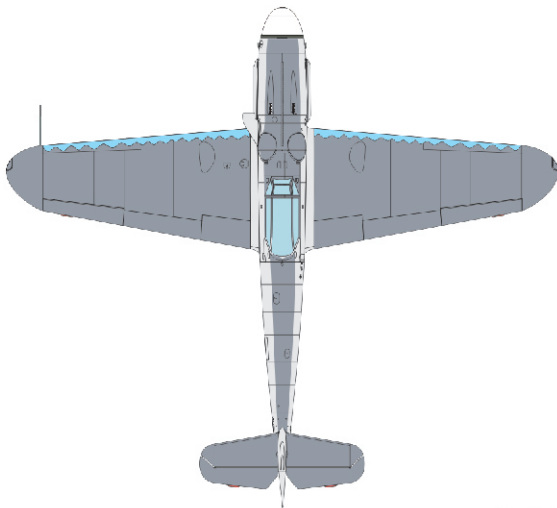
NOTE:
INSTAL EXHAUST ON PAINTED KIT



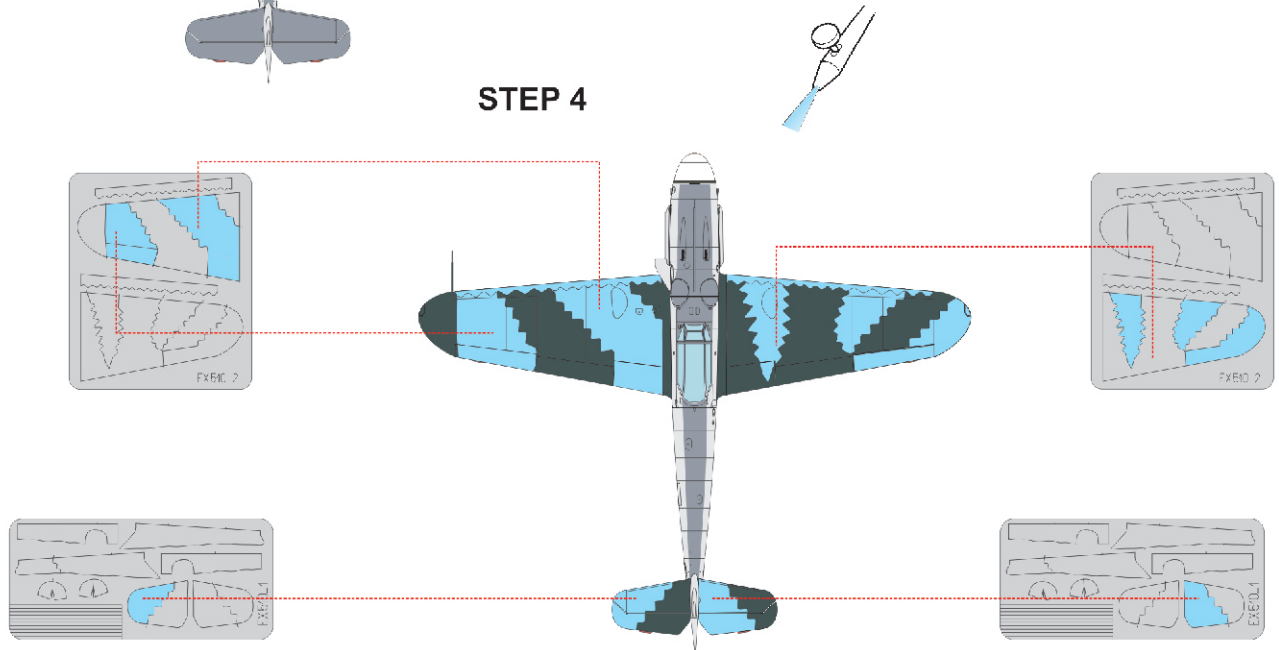
STEP 2



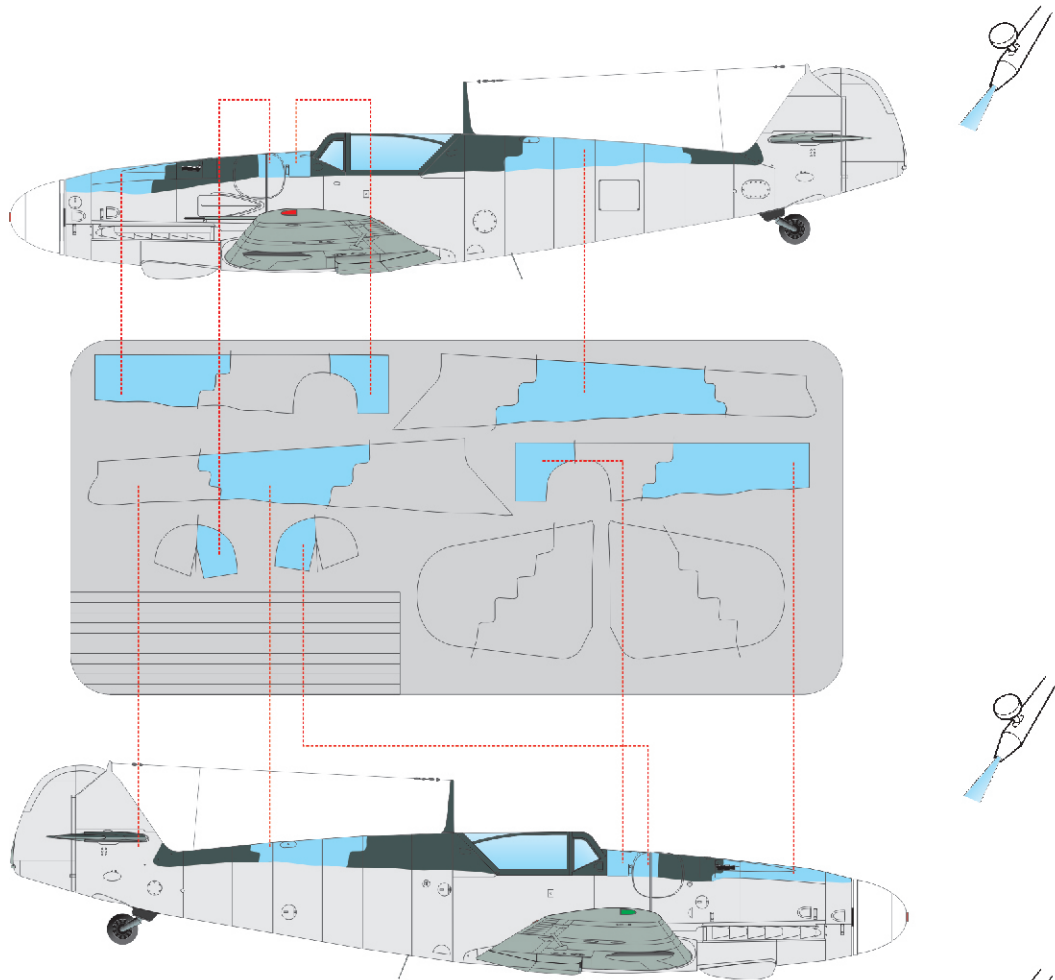
STEP 3



STEP 4



STEP 5



STEP 6

